

Colorimeter XZB-C220



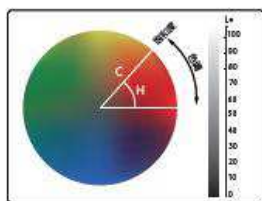
Colorimeter is widely used in different industries such as plastic cement, printing, paint, weaving and dyeing. It measures the sample color data $L^*a^*b^*$, $L^*c^*h^*$, color difference ΔE and ΔLab according to CIE color space.

1. Introduction

Device sensor exports Japan and information processing chip is from USA, which guarantee the optical signal transfer accuracy and electrical signal stability. Display accuracy is 0.01, repeated test accuracy ΔE deviation value is below 0.08.

2. Multiple color space display color values : $L^*a^*b^*$ 、 $L^*c^*h^*$ 、 Yxy

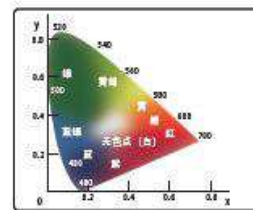
Being the most commonly used testing device, our colorimeter with built-in color display indicators transformation program, which makes our device could be used for color testing in many different industries. And it do not need convert the measurement data by manual so it greatly improve the work efficiency.



CIE $L^*c^*h^*$ Color Space



CIE $L^*a^*b^*$ color space



Yxy Color Space

3. Can Test Degree of Whiteness and Yellowness

Degree of Whiteness: Hunter whiteness, Gantz whiteness



ShenZhen Xinzhibang Inst. & Eqpt. Co., Ltd

Tel: +86 18026689205

Skype: melinda829

Email: sales@xzbinstrument.com

Web: www.xzbelec.com

Degree of Yellowness: YI

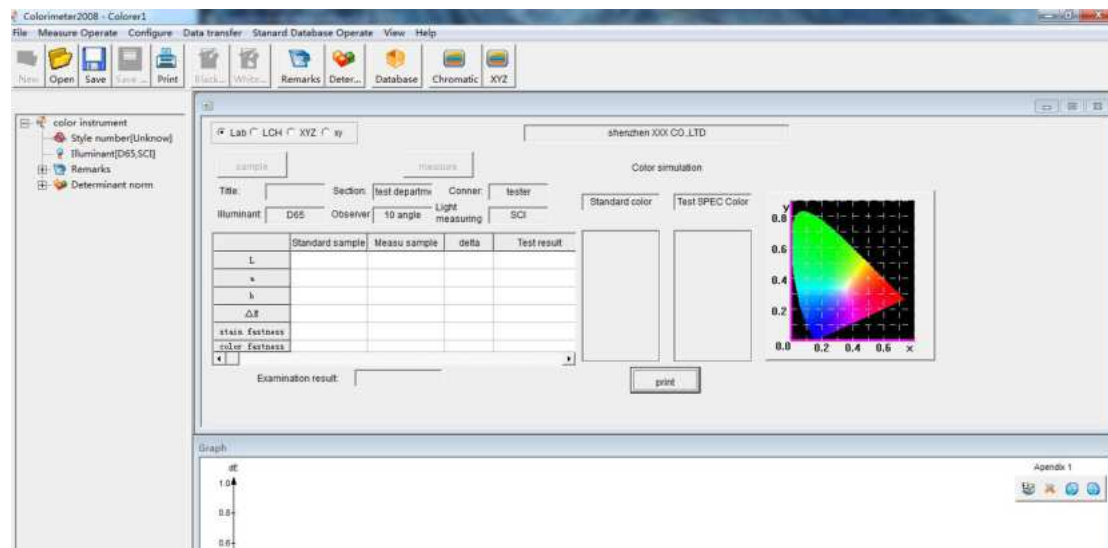
4. Ergonomic Design

Instrument girth radian designs according to human palm so we could test data for a long time with it. Superior leather design increases the friction in case of fingers sliding.



5. Free Color Management Software

Real-time display of qualified or not, generate testing report, save the color data, suitable for the enterprise to evaluate color and control the color data.



6. Establish the Standard Sample Data $L^*a^*b^*$ by manually

The standard samples can be manually set to meet the color difference test if there is no sample in hand.

7. The device could store 100 standard sample groups and every sample group could

www.xzbelec.com



ShenZhen Xinzhibang Inst. & Eqpt. Co., Ltd

Tel: +86 18026689205

Skype: melinda829

Email: sales@xzbinstrument.com

Web: www.xzbelec.com

store 100 sample data.

8. Test different points on sample and get the average value. It is widely used for color control whose color is not uniform.

9. Advantages

XZB-C220 includes specular component excluded (SCE) measurement mode, which is especially suitable for measuring and managing the color data of powder colloid materials, high-reflective materials, etc.



10. More Pictures

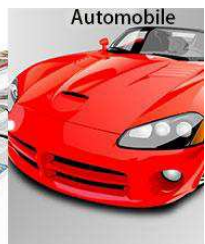
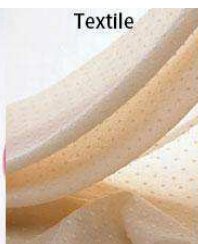


11. Technical Data

Type	XZB-C220
------	----------

Illumination system	8/d (8°/diffused illumination)
	SCE
Testing Port Diameter	About 8mm
Measuring conditions	CIE 10° standard observer; CIE D65 light source
Measuring range	L*: 1-100
Repeatability	Standard deviation within ΔE^*ab^* , below 0.08 (testing condition: measure the white calibration board 80 times for average)
Display	Chromaticity Value: $L^*a^*b^*$, L^*c^*h , ΔE^*ab , XYZ, Yxy, Relative RGB, color difference ΔE^*ab , ΔE^*ch Whiteness: Hunter Whiteness, Ganz Whiteness; Yellow: YI
Storage	100 sets of standard samples; up to 100 under each standard sample
Measuring time	About 0.5 seconds
Measuring light source	LED
languages	Chinese, English
Power	Four AA1.5V Alkaline battery or nickel-metal hydride batteries; Exclusive DC5V adapter
port	USB2.0 printer
weight	550g
Size	77×86×210mm

12. Application



13. Technical Support



ShenZhen Xinzhibang Inst. & Eqpt. Co., Ltd

Tel: +86 18026689205

Skype: melinda829

Email: sales@xzbinstrument.com

Web: www.xzbelec.com



a. One Year Guarantee Time.

ShenZhen Xinzhibang Inst. & Eqpt. Co., Ltd